



CORTEN
DEKMETAL[®]

CORTEN

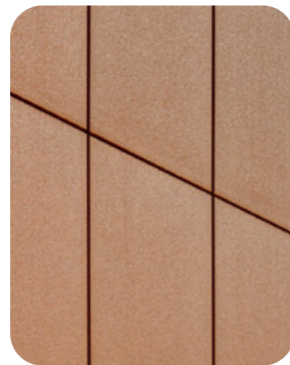
WITH INCREASED RESISTANCE TO ATMOSPHERIC CORROSION

Within one month from application, sheet-metal visual elements from this material acquire typical very impressive patina of natural rust.

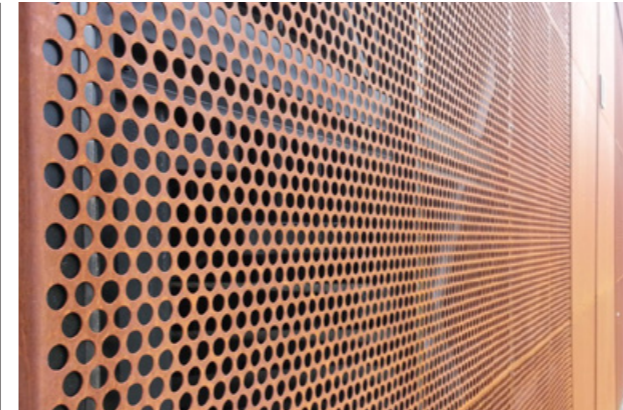
In recent years, this type of finish is sought very much by architects due to its uninterchangeable design.

Its matt thick surface distinguishes this material significantly from the appearance of other facade visual elements.

This specific type of steel can be supplied both in the form of DEKMETAL facade elements (DEKCASSETTE, DEKLAMELLA, DEKPROFILE) and in the form of sheet metal.







IMITATION

On request, Dekmetal is able to provide a wider array of decors, both on FeZn and on Al materials.

There are three decors normally kept in stock, two decor imitating the Corten material.

The decors imitate the appearance of natural materials while maintaining all the mechanical advantages of sheet metal.

They are non-fading and do not require any special maintenance, such as additional application of varnish, coating etc.

