

# CLADDING OF CONTAINERS

## FACADE DESIGN FOR CONTAINER SYSTEMS

Cladding design of container systems with the DEKMETAL facade cladding is a fast, highly aesthetic, modern and affordable solution. The main advantage of the DEKMETAL facade system consists in its absolute variability. All elements are tailor-made for a specific project and can be adapted to all container and modular systems.

The DEKMETAL cladding system is suitable both for newly produced containers and for additional reconstructions and revitalisations of used older systems of containers and dwelling units, which it provides with an elegant and modern appearance.

The use of all system and aesthetically-technically suitable tinsmith / lining elements (flashing) is the final product of the cladding of the mobile home itself, or a composite container assembly indistinguishable from masonry or other types of real estate.

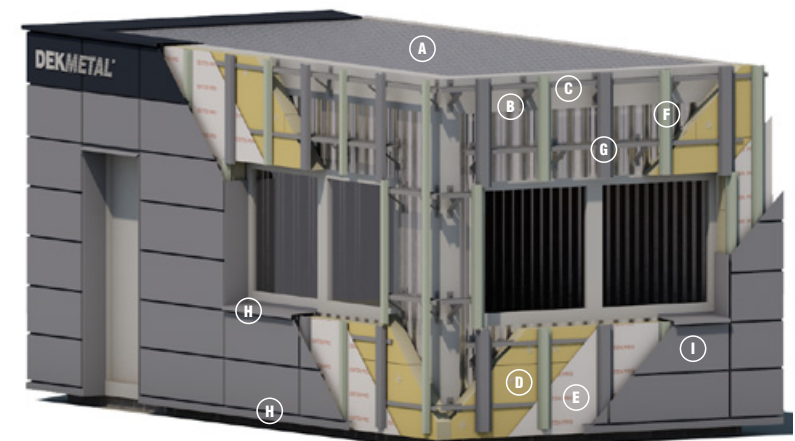


### CONTENT OF DELIVERY:

- DEKMETAL visual elements in a wide array of materials and colours.
- Complete system of substructure and all connecting material.
- Tinsmith / lining elements (flashing), Window sill, jump, head.
- Engineering design of cladding.
- Complete installation documentation for cladding, including pattern layout drawings and all structural details.
- Building alignment by own technician.
- Installation guide and training of an assembly company.
- Technical support during cladding installation.



CLADDING OF CONTAINER SYSTEMS



SYSTEM COMPOSITION:

- Ⓐ Container module (module set)
- Ⓑ Load-bearing console (e.g. A160 console)
- Ⓒ Z50 linear profile (basic finish)
- Ⓓ Thermal insulation (optional)
- Ⓔ Additional safety foil (optional)
- Ⓕ Omega 50 profile (basic finish)
- Ⓖ Omega 80 profile (front color coated treatment)
- Ⓗ Tinsmith / lining elements (flashing)
- Ⓘ Visual elements (DEKCASSETTE, DEKLAMELLA, DEKPROFILE)

INSTALLATION PROCEDURE:

1. Assembled set of modules ready for the installation of facade cladding.
2. Installation of point system consoles (A or L consoles) of direct installation of profiles (without the need to rectify unevenness).
3. Installation of linear profiles and their levelling.
4. Installation of tinsmith / lining elements (flashing) - window sill, jump, head, corner, etc.).
5. Marking out of visual profiles and their formatting to the required dimension (only the DEKPROFILE LINE).
6. Edging of transitions and opening fills (only the DEKPROFILE LINE).
7. Installation of precise front products ( DEKCASSETTE, DEKLAMELLA LINE).
8. Final appearance of the facade cladding using the DEKMETAL system of original set of container modules.

