



# DEKCASSETTE IDEAL



## DESCRIPTION

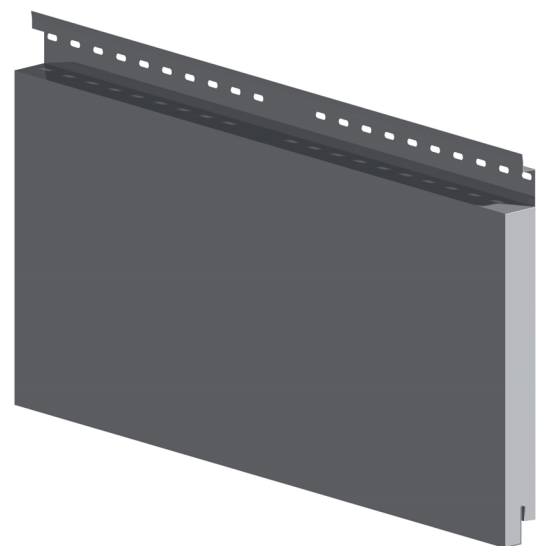
The DEKCASSETTE IDEAL is just one of the façade covering elements available from DEKMETAL façade systems. This cassette allows you to create an attractive, lightweight, durable and economical covering for the ventilated façades of industrial, administrative and civic buildings. When using the DEKMETAL façade systems it is possible to perform thermal insulation of the façade of the building while at the same time respecting all the latest developments in thermal technology.

The shape and construction of the DEKCASSETTE IDEAL cartridge allows the creation of smooth flat, square and rectangular grids without any visible anchoring elements. This gives the façade an exclusive appearance. Controlled stretching joints between tiles can highlight the selected line of the object.

The design and material solutions presented by DEKCASSETTE IDEAL cartridges, in combination with other elements of the DEKMETAL façade system, allow the use of a wide variety of color and shapes of the façade while respecting the ideas of the investors and the architect about the building's appearance without any major structural constraints.

Parts of the DEKMETAL façade system are additional elements without a static function. These are covering corner profiles, corners, frames, attic sheeting, eaves, ventilation grilles and the like. These items may be available in whatever shapes the customer requires.

More detailed information on the other elements of the system are described in the separate datasheets of the individual components, as well as the relevant assembly documents, which can be freely downloaded from: [www.dekmetal.com](http://www.dekmetal.com)

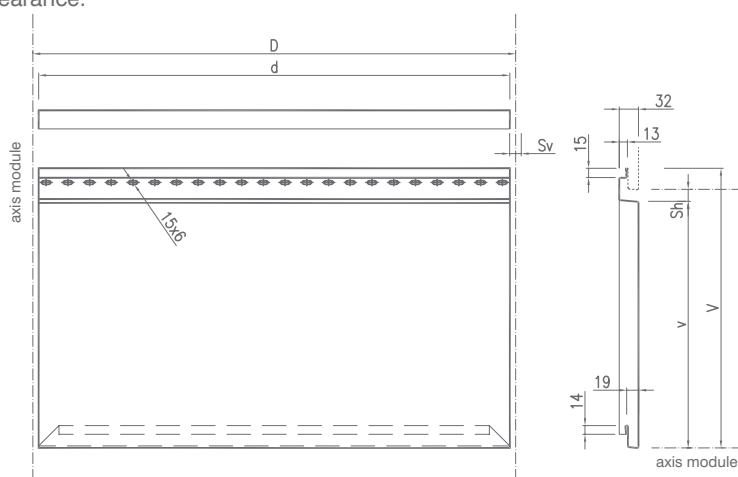


# TECHNICAL SPECIFICATIONS

## DIMENSIONS AND MATERIALS

The façade cassette DEKCASSETTE IDEAL is a square or „bent“ rectangular element with a system of interlocking „knuckles“, which are fastened with bolts to the supporting grate. The edge of the cassette is inserted into the lock of the cartridge already mounted. The second edge is screwed to the support grid. Because the fixing screws are hidden in the lock, the cassette is formed on the façade of a regular row of elegant joints. The width of the vertical joints can be 5-50 mm and width of the horizontal joints can be 5-35 mm. The surface of the cassette is protected by a protective film during installation.

The basic materials are painted galvanized sheets (sheet S250-320GD + Z275 treated with polyester paint to a thickness of 25 microns and 35 µm, according to the type of coating selected), in both glossy and matte shades. It is possible to deliver specific surface finishes and decors such as: imitation wood finishes, stone tiles, metallic paint, crystal-changing or varying degrees patina copper, titanium, zinc or corten. It is also possible to produce non-ferrous sheet metal (copper, aluminum, titanium), which are supplied in normal, varnished or pre-weathered treatment versions. These modifications lend the façade cassettes very specific, in some cases an unmistakable appearance.

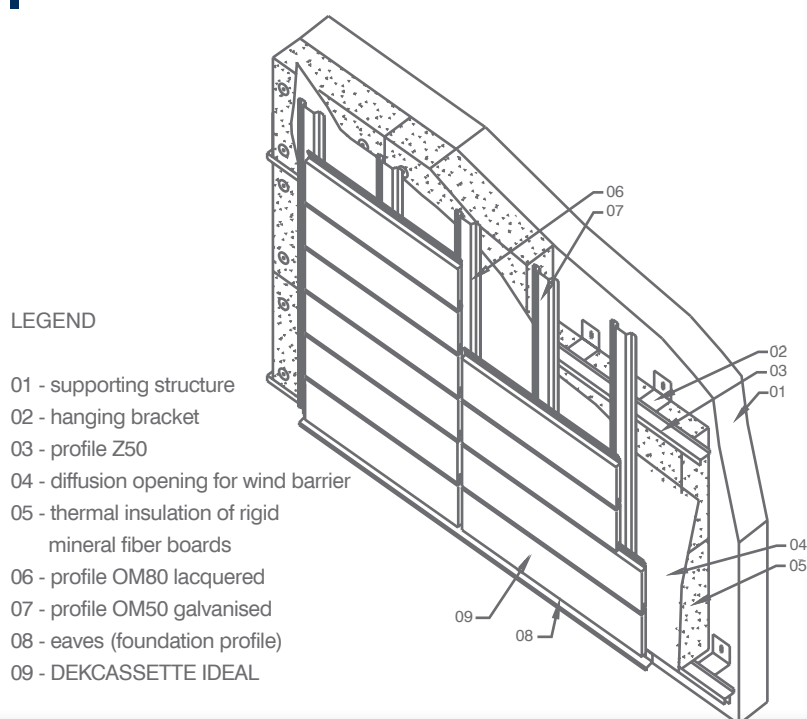


Composite Length d (mm)	150 - 6000
Composite Height v (mm)	100 - 800
Total Length D (mm)	d + Sv
Total Height V (mm)	v + Sh + 35
Depth (mm)	32
Horizontal Cleft Sh (mm)	5 ... 35
Vertical Cleft Sv (mm)	5 ... 50
Sheet Thickness (mm)	0,75* 1,00 1,20*

\* Before using a sheet of the thickness 0,75 mm a 1,20 mm, please consult with the manufacturer

The manufacturing tolerances of the individual dimensions and angles for the products listed in this data sheet are given in the internal, regularly updated Manufacturer Directive No. 00089/2004. This directive is fully consistent with the relevant product standards and established production management system ISO 9001. The specific tolerances are available upon request from the manufacturer.

## SYSTEM COMPOSITION



### LEGEND

- 01 - supporting structure
- 02 - hanging bracket
- 03 - profile Z50
- 04 - diffusion opening for wind barrier
- 05 - thermal insulation of rigid mineral fiber boards
- 06 - profile OM80 lacquered
- 07 - profile OM50 galvanised
- 08 - eaves (foundation profile)
- 09 - DEKCASSETTE IDEAL

## CONTACTS

CZECH REPUBLIC  
info@dekmetal.cz

GERMANY  
info@dekmetal.de

SLOVAKIA  
slovensko@dekmetal.sk

POLAND  
info@dekmetal.pl

For a detailed breakdown of individual regions and contact details for our sales managers, please see the Contacts section on the website:

[www.dekmetal.com](http://www.dekmetal.com)